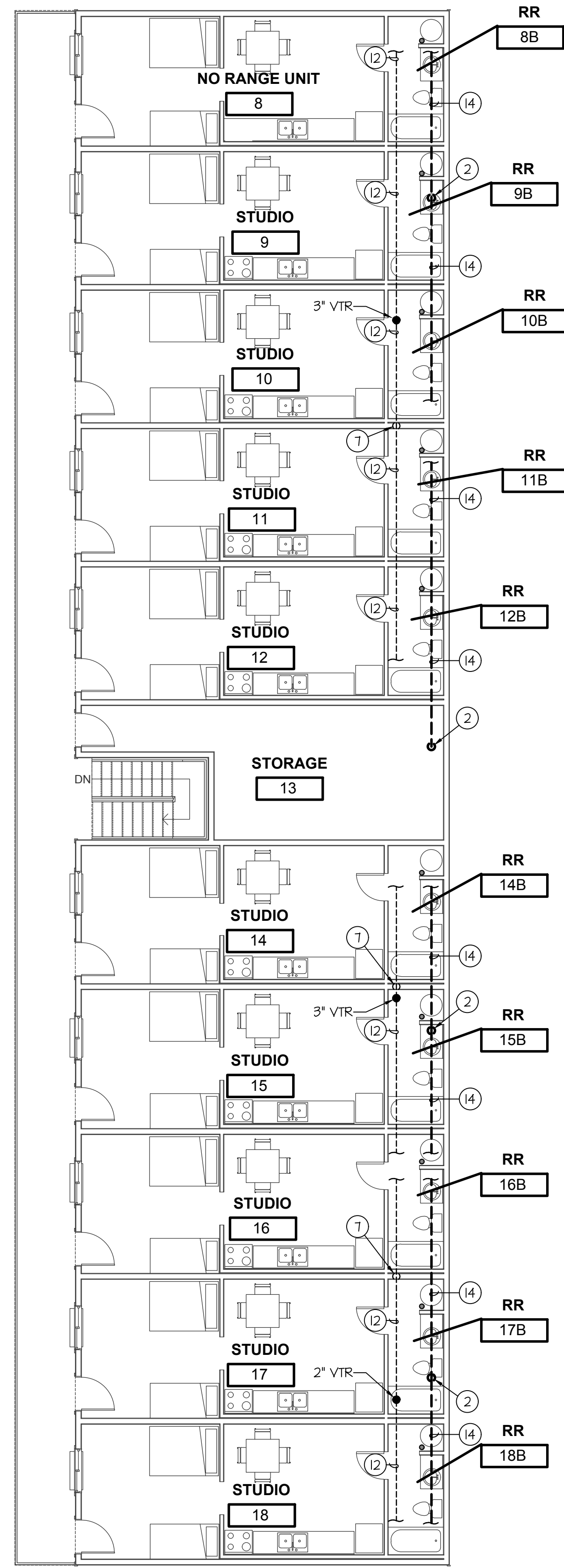
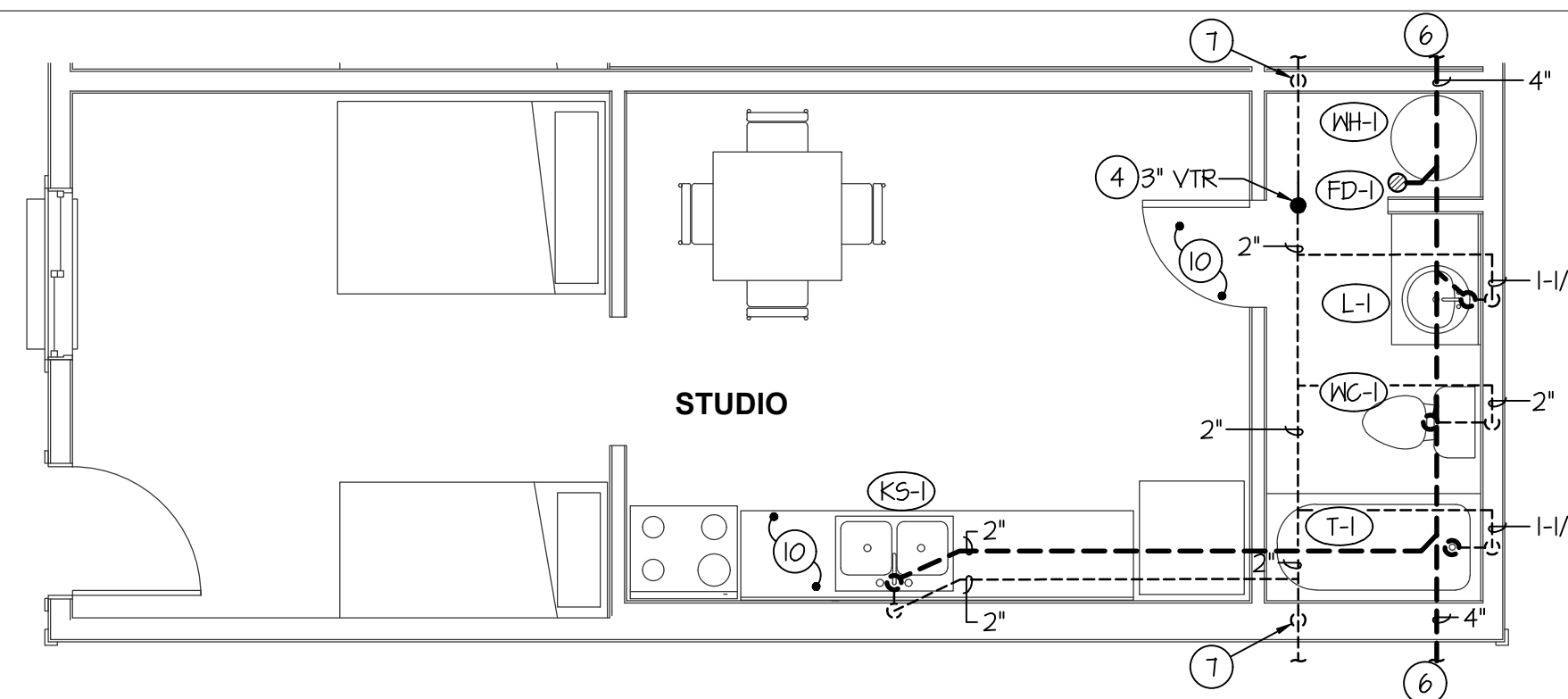


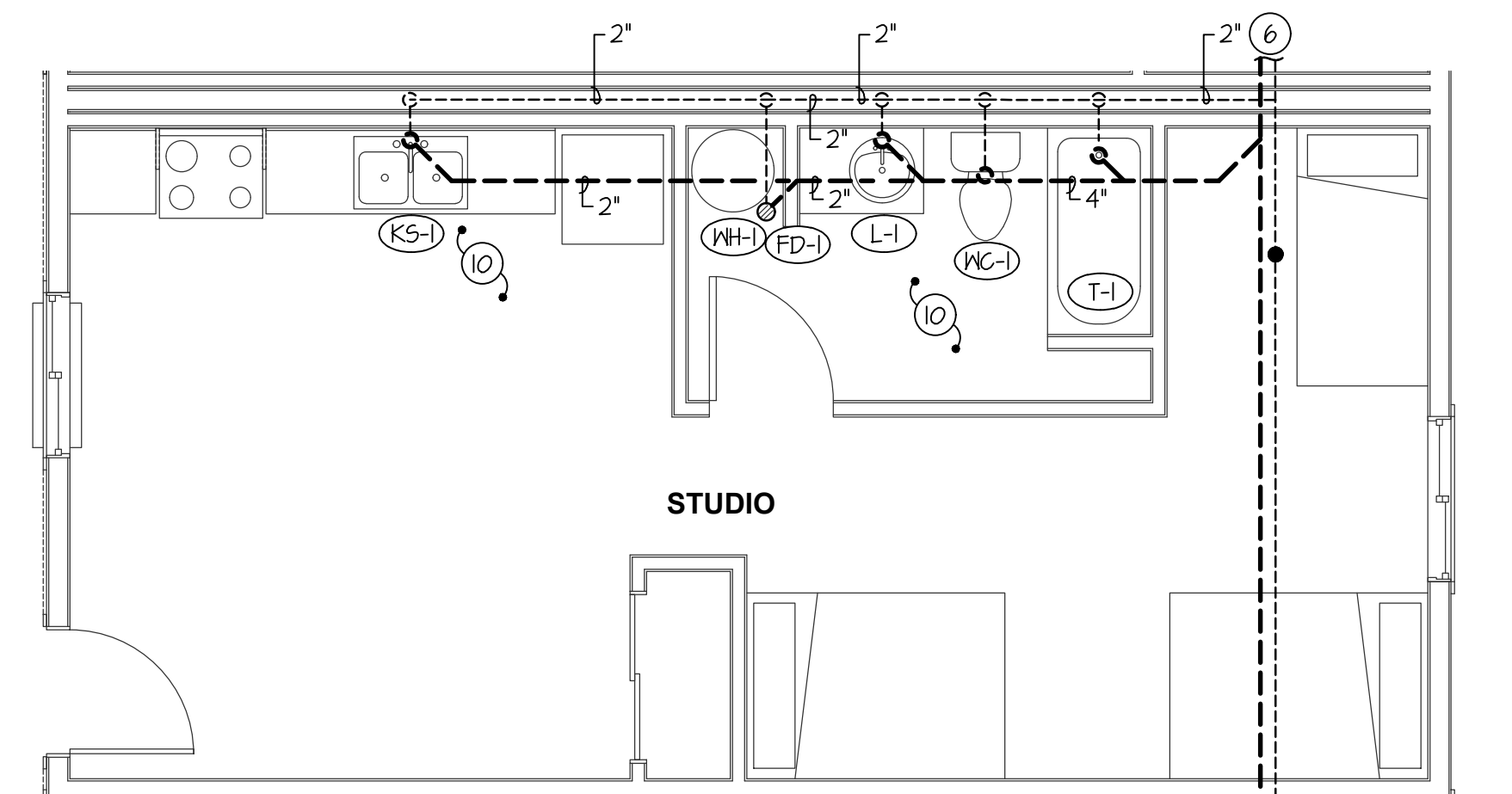
MAIN LEVEL WASTE & VENT FLOOR PLAN
SCALE: 1/8" = 1'-0"



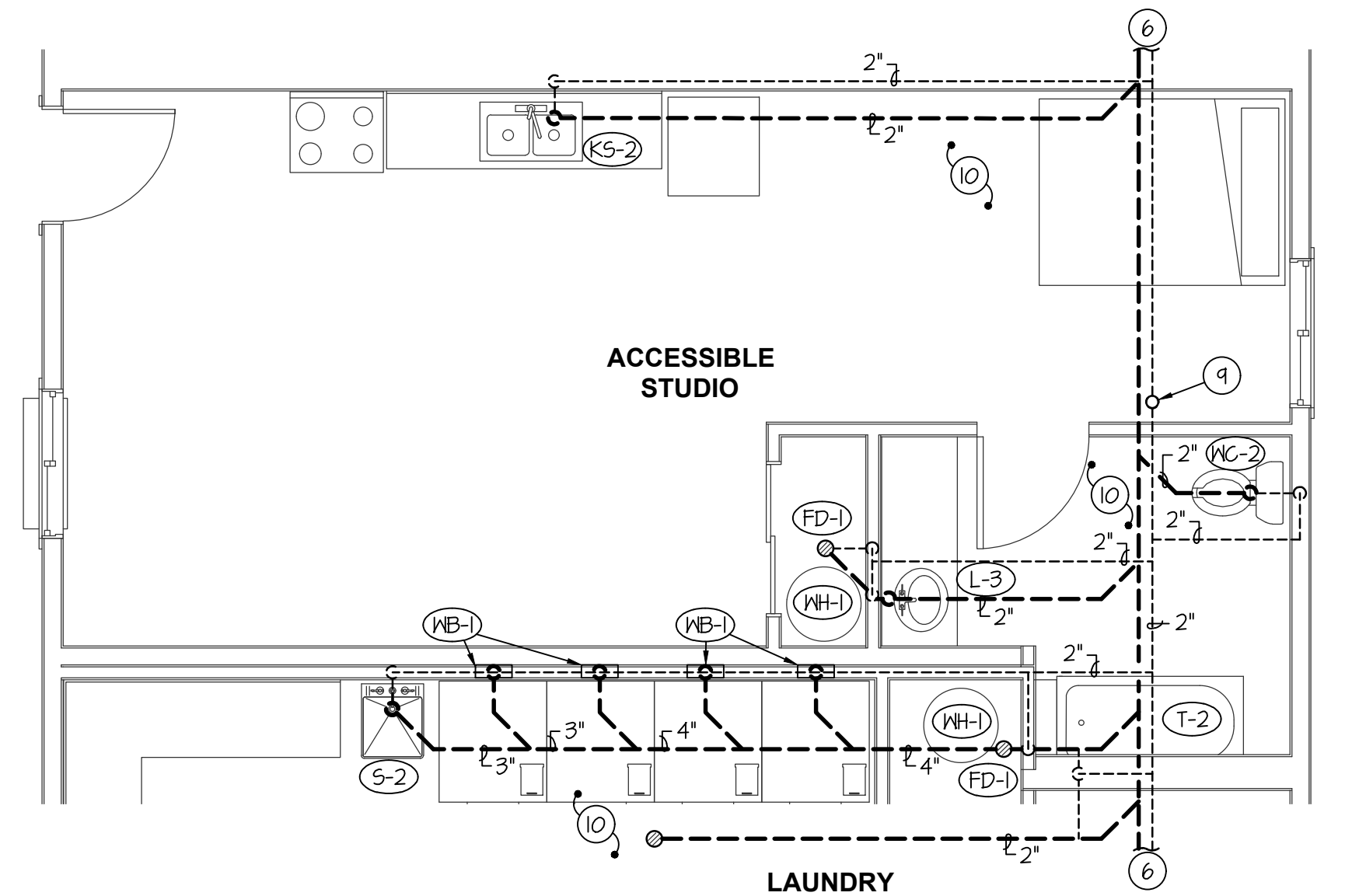
SECOND LEVEL WASTE & VENT FLOOR PLAN
SCALE: 1/8" = 1'-0"



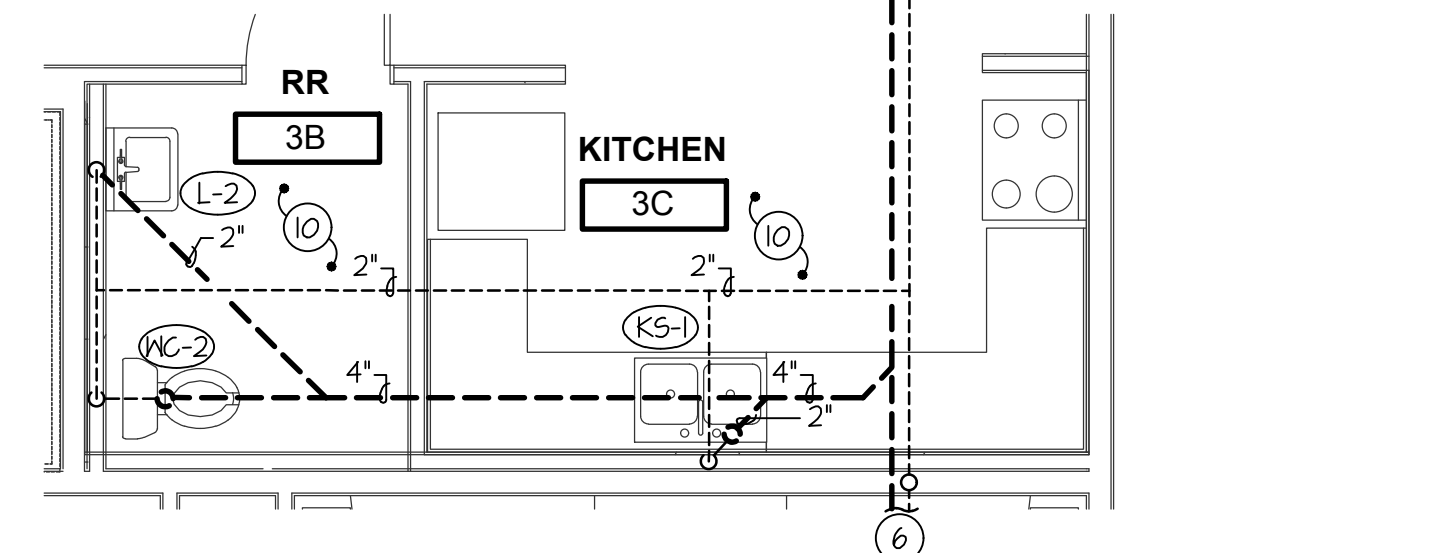
SECOND LEVEL TYP. WASTE & VENT FLOOR PLAN
SCALE: 1/4" = 1'-0"



MAIN LEVEL TYP. WASTE & VENT FLOOR PLAN
SCALE: 1/4" = 1'-0"



MAIN LEVEL ADA WASTE & VENT FLOOR PLAN
SCALE: 1/8" = 1'-0"



MAIN LEVEL KITCHEN WASTE & VENT FLOOR PLAN
SCALE: 1/4" = 1'-0"

PLAN NOTES:

- 1 SEE CIVIL PLANS FOR CONTINUATION.
- 2 4" WASTE FROM ABOVE OR TO BELOW. SEE THIS SHEET FOR CONTINUATION. RUN AT 1/8" SLOPE IF REQUIRED.
- 3 NOT USED
- 4 MIN (QTY 2) 3" VTRS AND (QTY 1) 2" VTR FOR ENTIRE BUILDING. RUN VENTS TO NEAREST VTR AS REQUIRED.
- 5 SEE PIPING IN OUTSIDE WALL DETAIL ON SHEET P2-O.
- 6 SEE THIS PLAN FOR CONTINUATION.
- 7 2" VENT FROM BELOW IF APPLICABLE. SEE FIRST FLOOR VENT PLANS ON THIS SHEET.
- 8 NOT USED
- 9 2" VENT TO ABOVE. SEE THIS PLAN FOR CONTINUATION.
- 10 SEE PLUMBING SCHEDULE FOR BRANCH LINE SIZES NOT INDICATED ON PLANS.
- 11 2" VENT LINE IN FLOOR SPACE ABOVE. SEE LARGE SCALE PLANS ON THIS SHEET FOR TYPICAL CONNECTIONS.
- 12 2" VENT LINE IN ROOF SPACE ABOVE. SEE LARGE SCALE PLANS ON THIS SHEET FOR TYPICAL CONNECTIONS.
- 13 4" WASTE UNDER SLAB. SEE LARGE SCALE PLANS ON THIS SHEET FOR TYPICAL CONNECTIONS.
- 14 4" WASTE IN FLOOR SPACE. SEE LARGE SCALE PLANS ON THIS SHEET FOR TYPICAL CONNECTIONS.

PLUMBING LEGEND

SYMBOL	DESCRIPTION
V	VENT
VTR	VENT THRU ROOF
CO	CLEANOUT
WCO	WALL CLEANOUT
COTG	CLEANOUT TO GRADE
e	PIPE DROP
o	PIPE RISE
⊘	BALL TYPE ISOLATION VALVE
---	SOIL OR WASTE PIPING
---	VENT LINE PIPING
---	DOMESTIC COLD WATER PIPING
F	FIRE SPRINKLER LINE
---	DOMESTIC HOT WATER PIPING
G	GAS PIPING
CD	CONDENSATE DRAIN PIPING

GENERAL NOTES:

- A- THE CONTRACTOR SHALL CHECK AND VERIFY ALL DIMENSIONS AND CONNECTIONS ON THE JOB SITE. ALL WORK SHALL BE EXECUTED FROM MEASUREMENTS TAKEN AT THE SITE.
- B- THE MECHANICAL CONTRACTOR SHALL BE RESPONSIBLE TO INSURE PROPER CODE CLEARANCES FOR ELECTRICAL AND MECHANICAL ACCESS WHEN INSTALLING ANY EQUIPMENT SUPPLIED BY THE MECHANICAL CONTRACTOR.
- C- IT IS CRITICAL THAT THIS CONTRACTOR COORDINATE EQUIPMENT LOCATIONS WITH PIPING, DUCTWORK, ELECTRICAL CONDUIT AND BUILDING STRUCTURE TO INSURE CODE COMPLIANCE.
- D- CEILING DIFFUSERS ARE SHOWN IN APPROXIMATE LOCATIONS. REFER TO LIGHTING PLANS AND REFLECTED CEILING PLAN FOR EXACT LOCATIONS.
- E- DUCT DIMENSIONS CALLED OUT ON DRAWINGS ARE INSIDE FREE AREA DIMENSIONS. ACOUSTICAL DUCT LINER ARE TO BE ADDED TO OVERALL MEASUREMENTS.
- F- ALL DUCTWORK AND PIPING WHICH PASSES THRU FIRE RATED WALLS TO BE FIRE STOPPED WITH APPROVED FOAM OR SEALANT. REFER TO SPECIFICATIONS FOR APPROVED MANUFACTURERS.

Engineered Systems Associates
1355 EAST CENTER
POCATELLO, IDAHO 83201
PHONE: (208) 233-0501
FAX: (208) 233-0529
EMAIL: esa@engsystems.com
ES&A JOB NUMBER: 19095

Professional Engineer Registered
Dwayne C. Sudweeks
STATE OF IDAHO
MAYNE C. SUDDWEEKS
May 21, 2020

A NEW FACILITY FOR:
VALLEY HOUSE
125 ROSE ST., TWIN FALLS, ID 83301
PLUMBING FLOOR PLAN

Laughlin Ricks Architecture
architecture/planning
935 Shoshone Street North • Twin Falls, Idaho 83301
(208) 736-8050 Fax: (208) 733-0950

DATE: _____
Drawn: _____
Checked: _____

P1-0